

Fantasy Animal – Year 7 Learn Sheet

LINE

A Line is the path left by a moving point, e.g. a pencil or a brush dipped in paint. A line can take many forms e.g. horizontal, diagonal or curved.

A Line can be used to show Contours, Movements, Feelings and Expressions.



SHAPE & FORM

A shape is an area enclosed by a line. It could be just an outline or it could be shaded in.

Form is a three dimensional shape such as a sphere, cube or a cone.

Sculpture and 3D design are about creating forms



TEXTURE

Texture is the surface quality of something, the way something feels or looks like it feels. There are two types of texture: Actual Texture and Visual Texture.

Texture

Actual Texture— really exists so you can feel it or touch it

Visual Texture— created using different marks to represent actual texture.

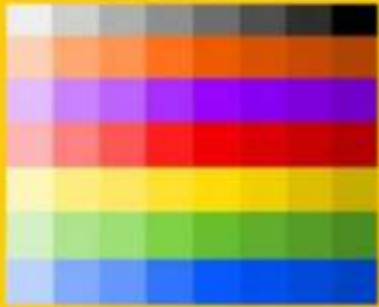


Actual Texture

Visual Texture

-tone

Tone means the lightness or darkness of something. This could be a shade or how dark or light a colour appears



warm colors



cool colors



PATTERN

A pattern is a design that is created by repeating lines, shapes, tones or colours.

Patterns can be manmade, like a design on fabric, or natural, such as the markings on animal fur.



COLOUR

There are 3 Primary Colours: RED, YELLOW and BLUE.

By mixing any two Primary Colours together we get a Secondary Colour:

ORANGE, GREEN and PURPLE



- **Mark making** describes the different lines, dots, **marks**, patterns, and textures we create in an **artwork**. It can be loose and gestural or controlled and neat.
- **Composition** - in a **painting** or sculpture, can be referred to the arrangement of elements (line, tone, colour etc) within an work of **art**.
- **Collage** describes both the technique and the resulting work of **art** in which pieces of paper, photographs, fabric and other ephemera are arranged and stuck down onto a supporting surface.
- **Cross-hatching** is a method of line drawing that describes light and shadow. Lines are placed closer together to create darker areas and moved further apart to create lighter ones

Tint and Tones: A **tint** is where an artist adds a colour to white to create a lighter version of the colour. An example of a **tint** is pink. Pink is a **tint** created by adding white to red. A **Tone** is where an artist adds black to a colour to darken it down.